



HT 0172 S-STYLE SPEED PRO HAIRDRYER COPPER

- **Powerful BLDC motor for professional results**
With 1,650 to 2,000 watts, the advanced BLDC motor offers fast and efficient drying - ideal for salon-worthy results.
- **Elegant design and robust construction**
The aluminum housing combines stylish looks with durability and robustness.
- **Versatile styling control**
Adjustable with 3 temperature and 3 power settings for customized results. The cool-shot function fixes the look and adds the finishing touches.
- **Ionic technology for shiny hair**
The integrated ionic function reduces frizz and ensures a smooth, shiny surface that leaves hair radiant.
- **Versatile accessory options**
The magnetically detachable concentrator enables precise styling, while the diffuser supports gentle drying and voluminous curls - for a personalized styling experience.
- **2.80 m long cable for maximum freedom of movement.**
Styling without restrictions - flexible comfort wherever you need it.



OVERVIEW OF IMPORTANT DATA

Art.-Nr.	HT 0172
Power	2,000 Watt
Colour / Material	bronze / black / Aluminium / Plastic
Cable length	280 cm
Packing dimensions (WxDxH)	23.0 x 0.8 x 27.0 cm
Gross weight incl. packaging	1.07 kg
Dimensions of the product (WxDxH)	18.5 x 0.6 x 25.8 cm
Net weight	0.60 kg
Display box	4 Pc.
EAN	4008146049279
Further special features	<ul style="list-style-type: none">- Automatic shutdown: no- On-off button: yes- Indicator light: no- Power levels: 3- Heat levels: 3- Number of attachments: 2- Motor speed: 110.000- Dry air flow: 210- Air discharge volume m³/h: 85

Product details



Powerful BLDC motor for professional results

The advanced BLDC motor offers a fast and efficient drying process - for salon-worthy results.



Elegant design and robust construction

The aluminum housing combines stylish looks with durability and robustness.



Versatile styling control

Adjustable with 3 temperature and 3 power settings as well as a cold air setting for customized results.



Ionic technology for shiny hair

The integrated ionic function reduces frizz and ensures a smooth, shiny surface that leaves hair radiant.



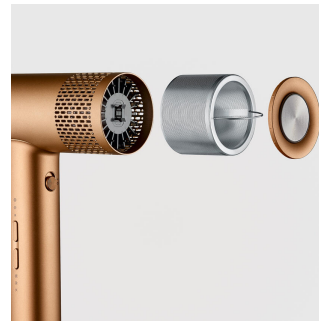
Versatile accessory options

The magnetically detachable concentrator enables precise styling, while the diffuser supports gentle drying and voluminous curls - for a personalized



2.80 m long cable for maximum freedom of movement.

Styling without restrictions - flexible comfort wherever you need it.



Removable filter for effortless cleaning

Hygienic and efficient, it ensures easy maintenance and long-lasting peak performance of your hairdryer.